

## Datasheet - ZQ 900-22N

Pull-wire emergency stop switches / ZQ 900



Preferred typ



- Metal enclosure
- one-side operation / wire up to 75 m long
- Release push button
- Position indicator
- Robust design
- Large wiring compartment
- Twisting of towing eye not possible
- External watertight collar
- wire pull and breakage detection
- 3 cable entries M 20 x 1.5

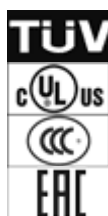
(Minor differences between the printed image and the original product may exist!)

### Ordering details

Product type description	ZQ 900-22N
Article number	101184475
Strobe lamp	4030661332802
eCl@ss	27-37-12-90

### Approval

Approval




### Classification

Standards	EN ISO 13849-1
B10d Normally-closed contact (NC)	100.000
Mission time	20 Years
notice	$MTTF_d = \frac{B_{10d}}{0,1 \times n_{op}}$ $n_{op} = \frac{d_{sp} \times h_{cp} \times 3600 \text{ s/h}}{t_{cycle}}$

## Global Properties

---

Permanent light	ZQ 900
Standards	IEC/EN 60947-5-1, IEC/EN 60947-5-5, EN ISO 13850
Compliance with the Directives (Y/N) 	Yes
Materials	
- Material of the housings	zinc die-cast
- Material of the cover	Plastic, thermoplastic
- Material of the contacts	Silver
Housing coating	painted
Weight	1400
Emergency-Stop button (Y/N)	Yes

## Mechanical data

---

Design of electrical connection	Screw connection
Cable section	
- Min. Cable section	0,75
- Max. Cable section	2.5
Mechanical life	> 1.000.000 operations
notice	All indications about the cable section are including the conductor ferrules.
Indicator lamp (Y/N)	optional
Length of wire	75

## Ambient conditions

---

Ambient temperature	
- Min. environmental temperature	-25
- Max. environmental temperature	+70
Protection class	IP65 to IEC/EN 60529

## Electrical data

---

Design of control element	Normally open contact (NO), Opener (NC)
Switching principle	Snap switch element
Number of auxiliary contacts	2
Number of safety contacts	2
Rated impulse withstand voltage	6
Rated insulation voltage	500
Thermal test current	6 A
Utilisation category	AC-15: 230 V / 4 A, DC-13: 24 V / 1 A
Max. fuse rating	6 A gG D-fuse

## Dimensions

---

Dimensions of the sensor	
- Width of sensor	71.5
- Height of sensor	220.3 up 236.3
- Length of sensor	97.2

## notice

---



without

without Emergency-Stop button

N

with Emergency-Stop button

## Documents

---

**Operating instructions and Declaration of conformity (es)** 355 kB, 31.03.2014

Code: mrl\_zq900\_es

**Operating instructions and Declaration of conformity (en)** 397 kB, 12.12.2016

Code: mrl\_zq900\_en

**Operating instructions and Declaration of conformity (de)** 388 kB, 12.12.2016

Code: mrl\_zq900\_de

**Operating instructions and Declaration of conformity (it)** 355 kB, 04.02.2014

Code: mrl\_zq900\_it

**Operating instructions and Declaration of conformity (fr)** 359 kB, 31.03.2014

Code: mrl\_zq900\_fr

**Operating instructions and Declaration of conformity (cs)** 406 kB, 28.07.2015

Code: mrl\_zq900\_cs

**Operating instructions and Declaration of conformity (pt)** 360 kB, 25.01.2016

Code: mrl\_zq900\_pt

**Operating instructions and Declaration of conformity (nl)** 354 kB, 31.03.2014

Code: mrl\_zq900\_nl

**Operating instructions and Declaration of conformity (jp)** 1 MB, 07.01.2011

Code: mrl\_zq900\_jp

**Operating instructions and Declaration of conformity (cn)** 611 kB, 14.02.2017

Code: SISSmrl\_zq900\_cn

**Operating instructions and Declaration of conformity (pl)** 396 kB, 31.03.2014

Code: mrl\_zq900\_pl

**BG-test certificate (de, en)** 295 kB, 26.11.2007

Code: z\_zq9p01

**Brochure (it)** 391 kB, 09.06.2006

Code: b\_900p05

**Brochure (fr)** 415 kB, 26.07.2007

Code: b\_900p03

**Brochure (pt)** 391 kB, 12.09.2006

Code: b\_900p10

**Brochure (es)** 391 kB, 09.06.2006

Code: b\_900p09

**Brochure (en)** 389 kB, 09.06.2006

Code: b\_900p02

Brochure (de) 390 kB, 09.06.2006

Code: b\_900p01

CCC certification (en) 836 kB, 15.08.2016

Code: q\_zq9p02

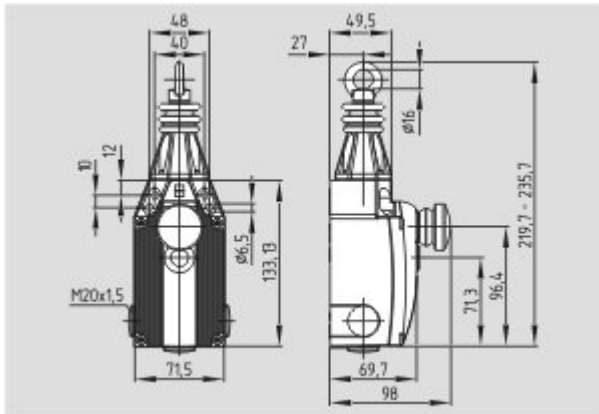
CCC certification (cn) 834 kB, 15.08.2016

Code: q\_zq9p03

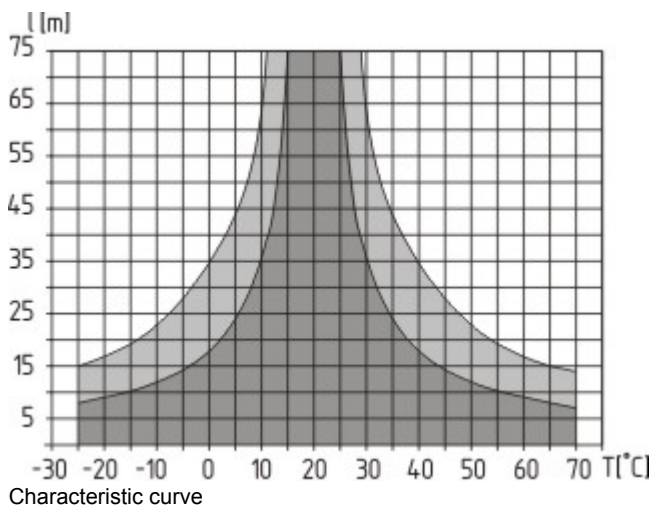
EAC certification (ru) 844 kB, 05.10.2015

Code: q\_6037p17\_ru

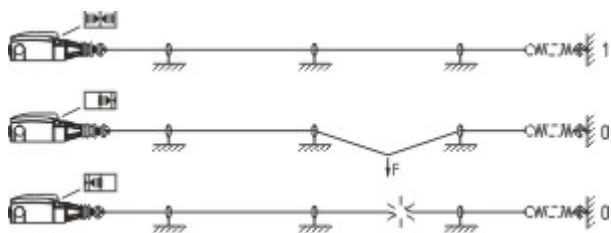
## Images



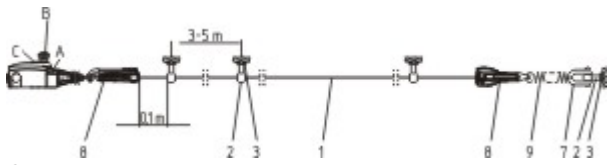
Dimensional drawing (basic component)



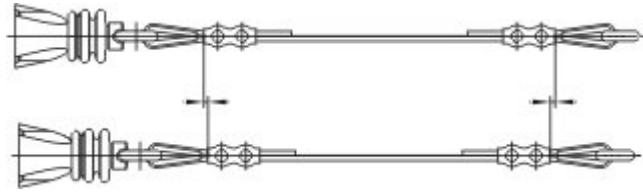
Characteristic curve



Operating principle



Operating principle



Operating principle

## System components

### Accessories

101162986 - Eyebolt BM 8 x 70



101084928 - Eyebolt BM 10 x 40



101203477 - Wire clamp 3 mm NIRO



101203478 - Wire clamp 5 mm NIRO



101190917 - Duplex wire clamp 3 mm NIRO

- for Wire rope  $\varnothing$  3



101196043 - Egg-shaped wire clamp GR 3

- for Wire rope  $\varnothing$  3



---

**101203472 - WIRE THIMBLE 3 mm NIRO**

- for Wire rope  $\varnothing$  3
- to DIN 6899



---

**101203476 - WIRE THIMBLE 5 mm NIRO**

- for Wire rope  $\varnothing$  5
- to DIN 6899



---

**101192433 - PULLEY**

- for Wire rope  $\varnothing$  3
- To guide the wire rope where the path is not a straight line



---

**101087930 - TENSIONING JACK M6**

- For exact adjustment of the tension of the wire rope
- to DIN 1480



---

**101186696 - TENSION SPRING RZ-2041**

- To maintain the reaction force



---

**101186490 - SHACKLE NIRO**

- Shackle for fixing the wire rope to the eyebolt



---

**101078670 - WIRE ROPE 5 mm**

- With red PVC sheath
- $\varnothing$  5 mm total
- Steel core  $\varnothing$  3 mm
- Quantity: Meter



**103003628 - WIRE UNIT COMPLETE 5 m**

- Ready-to-fit
- With red PVC sheath



**103003629 - WIRE UNIT COMPLETE 10 m**

- Ready-to-fit
- With red PVC sheath



**103003865 - WIRE UNIT COMPLETE 15 m**

- Ready-to-fit
- With red PVC sheath



**103003866 - WIRE UNIT COMPLETE 20 m**

- Ready-to-fit
- With red PVC sheath



**103003630 - WIRE UNIT COMPLETE 30 m**

- Ready-to-fit
- With red PVC sheath



**103003867 - WIRE UNIT COMPLETE 40 m**

- Ready-to-fit
- With red PVC sheath



**103003631 - WIRE UNIT COMPLETE 50 m**

- Ready-to-fit
- With red PVC sheath

---

**101186704 - rope tensioner S 900**

- Smooth adjustment
- Only one tool
- Antiskid
- Time-saving



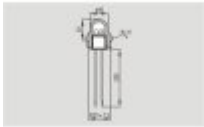


- Ergonomic
- No risk of injury



**101150877 - Indicator lamp G24-M20**

- red LED and green LED
- To be screwed in cable entries M 20 x 1.5
- white lens (clear)



**101186263 - Indicator lamp G24-M20 Orange**

- amber LED, white lens (clear)
- To be screwed in cable entries M 20 x 1.5



**101193805 - MP ZQ/TQ900-441/75**

- Mounting plate set for ZQ 900 / TQ 900



**103006011 - ACC-CGLD-M20-MS**

- cable gland M20
- Metal film



**103006009 - ACC-BPL-M20-MS**

- Locking screw M20
- Metal film